



The Great Fire of London

Key Vocabulary:

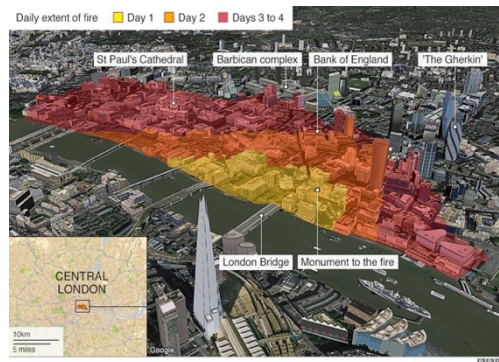
Leather Bucket	A bucket to hold water to put out fires.
Samuel Pepys	A Naval administrator who kept a diary during the Great Fire of London
King Charles II	The King ruling England at the time of the Great Fire of London.
Thatched roof	Most houses had thatched roofs made from straw which burned well.
Fire hook Axe	A tool used to pull down the houses to stop the fire spreading.
Gunpowder	An explosive substance used to blow up houses.
Pudding Lane	The street where the fire started.
St Pauls Cathedral	A very large church in London which was damaged during the fire and rebuilt.

Key Knowledge:

- The fire started on **Sunday 2nd September 1666** in **Thomas Farriner's** bakery (the King's baker) on **Pudding Lane**. The fires used for baking were not put out properly.
- The buildings in **London** were made of **wood and straw** and they were **very close together**, making it easy for the flames to spread. It had also been a dry summer, so the buildings were dry. Strong winds were blowing, which helped the flames to spread.
- People used **leather buckets** and **water squirts** to put the fire out, but these did not work. **King Charles II** ordered **buildings to be pulled down** to stop flames from spreading.
- Four days later, the wind changed direction and the **Navy had used gunpowder to blow up houses in the path of the fire**. The fire died down and people were able to put out the flames.

Did you know?

Up to 1/3 of the city was destroyed in 13,200 homes and 87 churches. 70 thousand people were homeless and the rebuild was thought to cost 10 million pounds. Only 6 people were recorded to have lost their lives, although it is thought many more died.



<p>Early Sunday morning</p> <p>The fire starts at Thomas Farriner's bakery on Pudding lane.</p>	<p>Mid Sunday morning</p> <p>As news of the fire spreads, people run to escape from its path.</p>	<p>Sunday morning</p> <p>Samuel Pepys starts to record the unfolding events in his diary.</p>	<p>Sunday evening</p> <p>Houses are pulled down in an attempt to stop the fire spreading.</p>	<p>Early Monday morning</p> <p>People carry their possessions to safety using boats on the River Thames.</p>
<p>Late Monday morning</p> <p>Carts are banned from going near the fire.</p>	<p>Monday evening</p> <p>The fire spreads very close to the Tower of London.</p>	<p>Tuesday</p> <p>St Paul's Cathedral is destroyed by the fire.</p>	<p>Wednesday</p> <p>The fire starts to burn more slowly as the wind dies down.</p>	<p>Thursday</p> <p>The fire is finally under control and put out.</p>